

Find Your Season

Winter

Colour Analysis

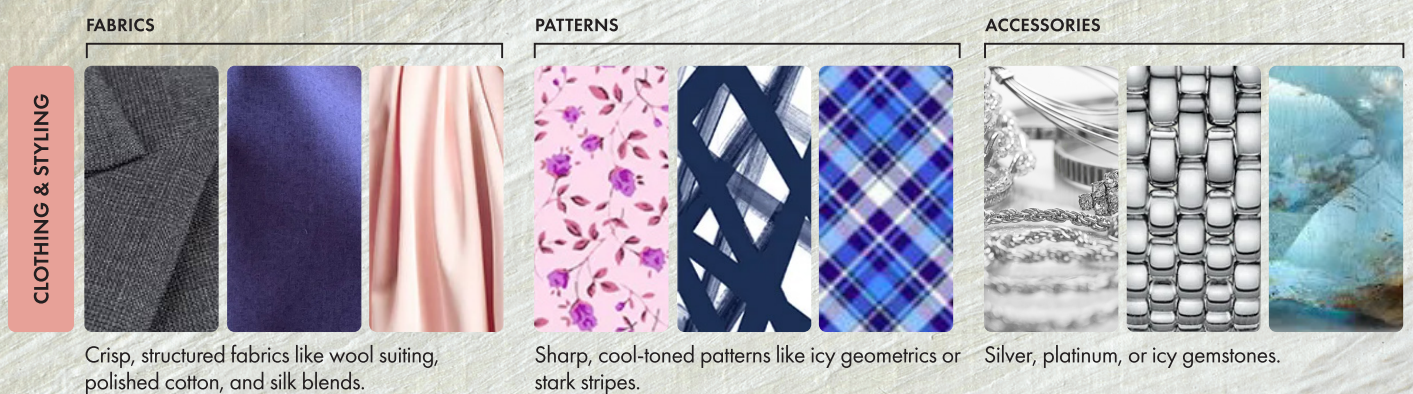
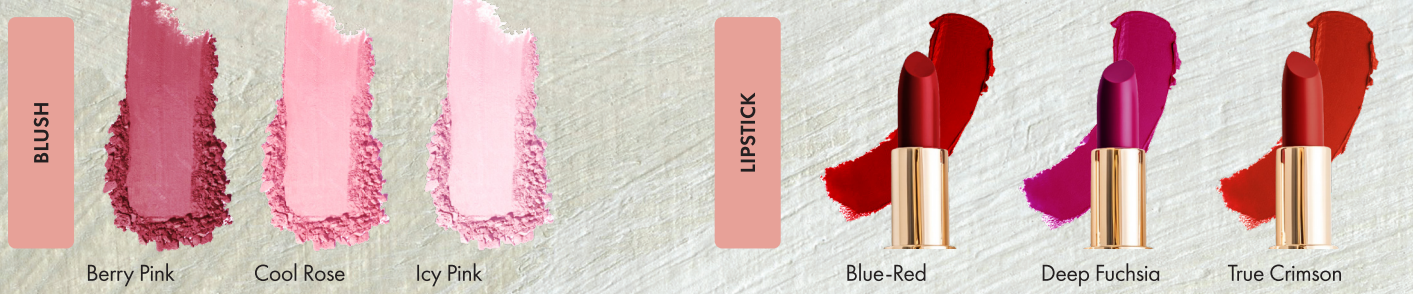
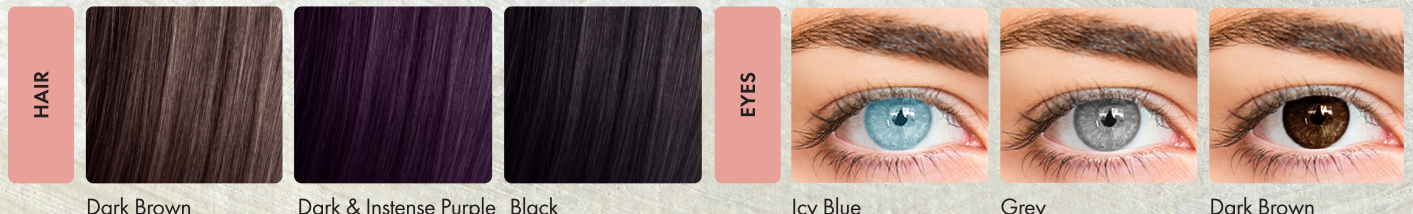
BOLD • CRISP • STRIKING • VIVID

Winter looks bold, crisp, and striking. The colours are deep and clear, with icy coolness and high contrast. The overall impression is dramatic, polished, and vivid, with strong intensity. Think of midnight black, snow white, jewel-like emeralds, and the brilliance of frosty winter air.

True Winter

True (Cool) Winter is icy, sharp, and striking. The palette appears crisp, bold, and high in contrast, with a cool edge that makes it feel clear and defined. It looks fresh, cool, and structured.

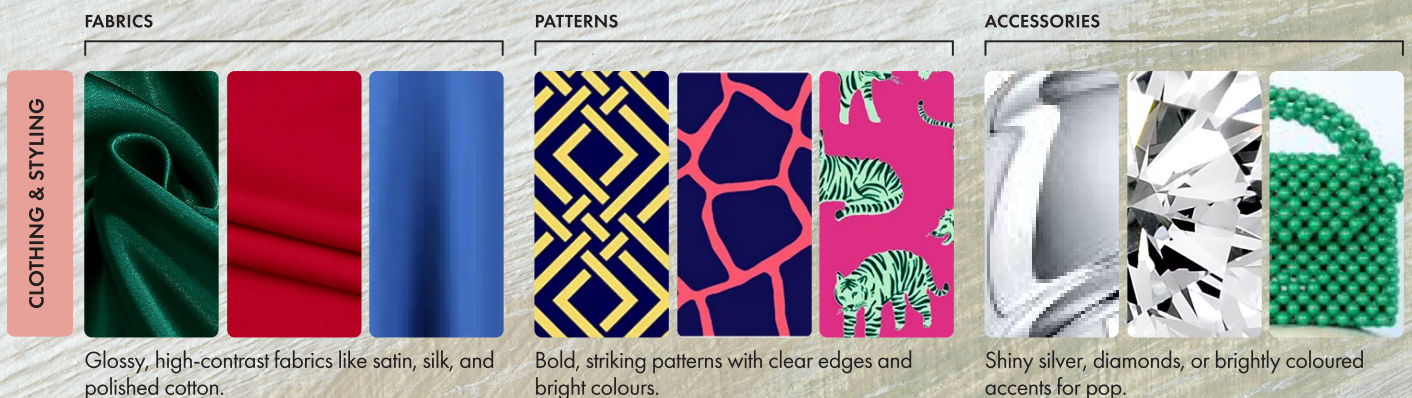
NOTE:
Avoid warm earthy shades: Olive, Rust, Mustard, Warm Beige, Camel, Burnt Orange, Gold



Bright Winter

Bright (Clear) Winter is vibrant, electric, and luminous. The palette looks crisp, vivid, and high-energy, with colors that stand out cleanly and sharply. It feels bright, clear, and full of intensity.

NOTE:
Avoid muted or earthy shades:
Dusty Rose, Olive, Mustard, Beige, Taupe, Rust, Brown



Deep Winter

Deep (Dark) Winter is dramatic and intense. The palette as a whole looks very dark and weighty, with a strong sense of contrast that feels solid and bold. It appears powerful, deep, and striking.

NOTE:
Avoid light or warm tones: Pastels, Beige, Peach, Mustard, Warm Tan, Rust, Cream

