

Find Your Season

# Spring

Colour Analysis

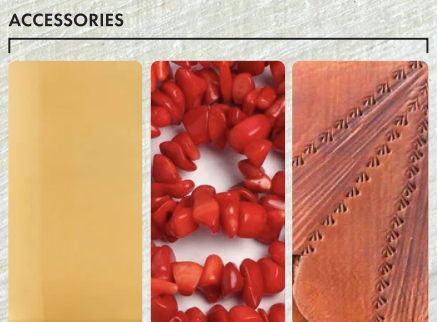
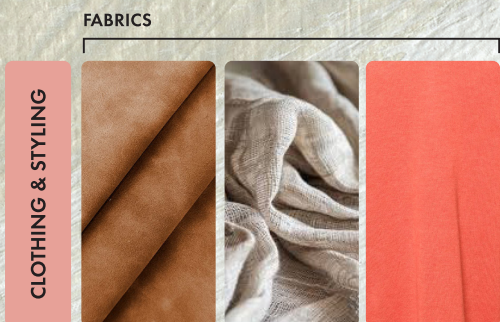
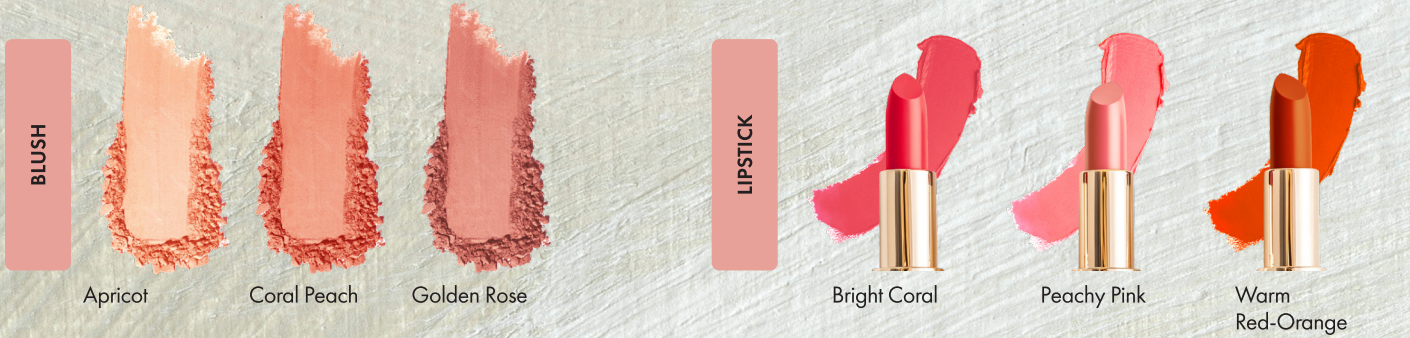
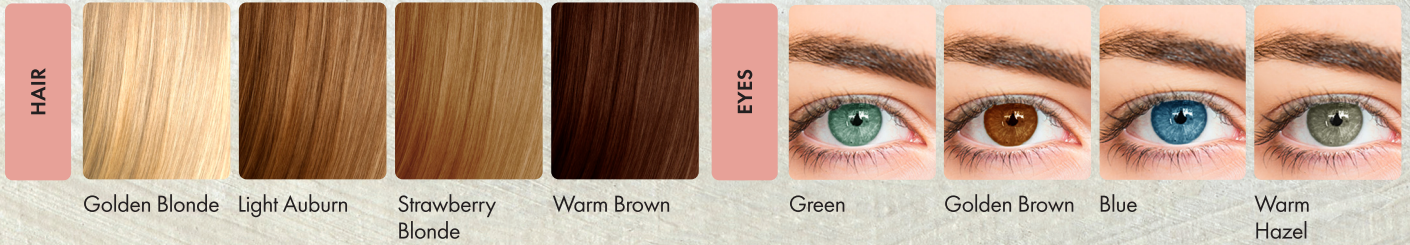
**FRESH • RADIANT • SUNLIT • CLEAR**

Spring looks fresh, lively, and glowing. The colours appear clear, gentle, and warm, giving a sunlit and radiant effect. The overall impression is bright, youthful, and full of energy without being heavy. Think of the clear greens of new leaves, the peachy warmth of blossoms, and the golden brightness of early morning sunlight.

# True Spring

True (Warm) Spring is radiant and golden, full of lively warmth. The palette looks strong, balanced, and glowing, with a steady brightness that feels natural and fresh. The impression is sunlit and vibrant, like fresh corals and golden greens.

**NOTE:**  
Avoid cool or muted tones: Cool Grey, Icy Pink, Burgundy, Black, Lavender, Muted Olive, Dusty Mauve



Warm, natural fibres like cotton knits, soft suede, and textured linens.

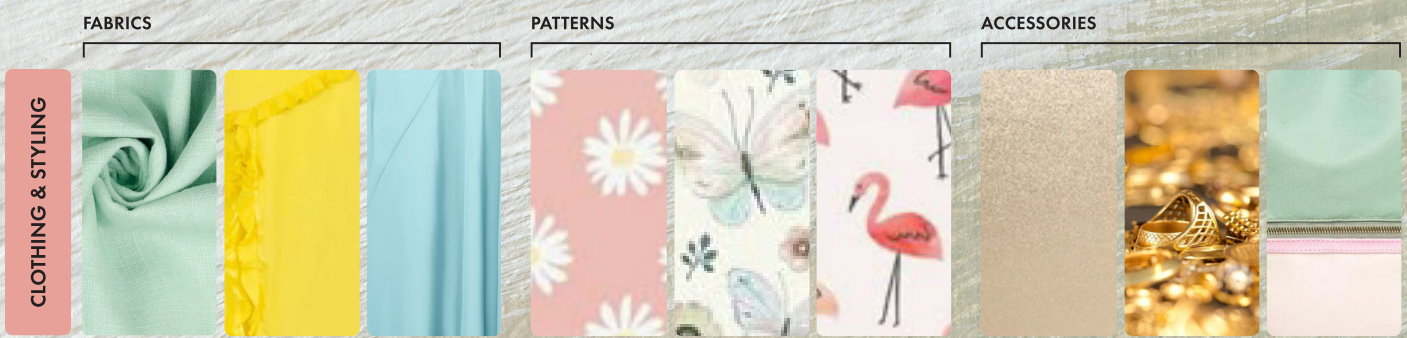
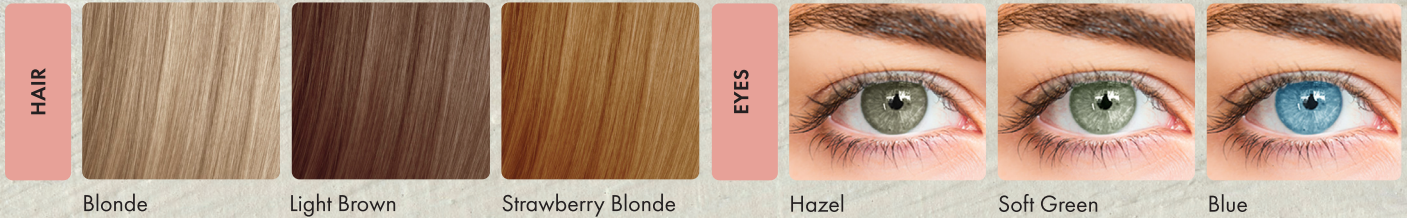
Organic, nature-inspired prints in warm, sunny colour mixes.

Yellow gold, coral stones, and earthy warm-toned bags or belts

# Light Spring

Light Spring features fresh, airy colors with a gentle warmth. The palette is mostly pale and soft, like watercolor pastels with a light, glowing quality. Overall, it feels bright, delicate, and warm.

**NOTE:**  
Avoid heavy, dark shades: Burgundy, Dark Navy, Black, Charcoal, Olive, Deep Teal, Mahogany



Soft, lightweight materials like cotton, linen, and silk that match your airy colouring. Delicate florals, soft stripes, and small-scale prints in pastel blends. Light gold or champagne gold jewelry, delicate finishes, and pastel-toned accents.

# Bright Spring

Bright (Clear) Spring is vivid and crisp, with sharp clarity. Colors appear bright, sparkling, and bold, standing out clearly without looking heavy. The palette feels luminous and jewel-like, full of clean, glowing brights.

**NOTE:**  
Avoid muted shades: Dusty Rose, Olive, Taupe, Soft Grey, Mustard, Beige, Brown

