

Find Your Season

# Autumn

Colour Analysis

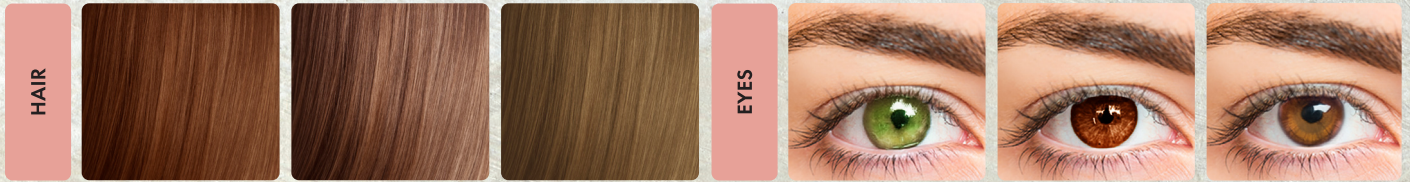
**WARM • EARTHY • RICH • GOLDEN**

Autumn feels rich, earthy, and warm. The colours are deeper and slightly softened, with a natural, golden undertone. The palette has a grounded, full-bodied look that conveys warmth and strength. Imagine autumn leaves, terracotta clay, and the golden light of late afternoon.

# True Autumn

True (Warm) Autumn is rich, golden, and glowing. The palette feels full, rounded, and strong, but never harsh, carrying a steady warmth that makes it look radiant. The impression is warm, earthy, and vibrant.

**NOTE:**  
Avoid icy or cool shades: Pure Black, Icy Pink, Cool Grey, White, Lavender, Navy Blue, Silver



Rich, textured fabrics like wool, tweed, and rustic linen.

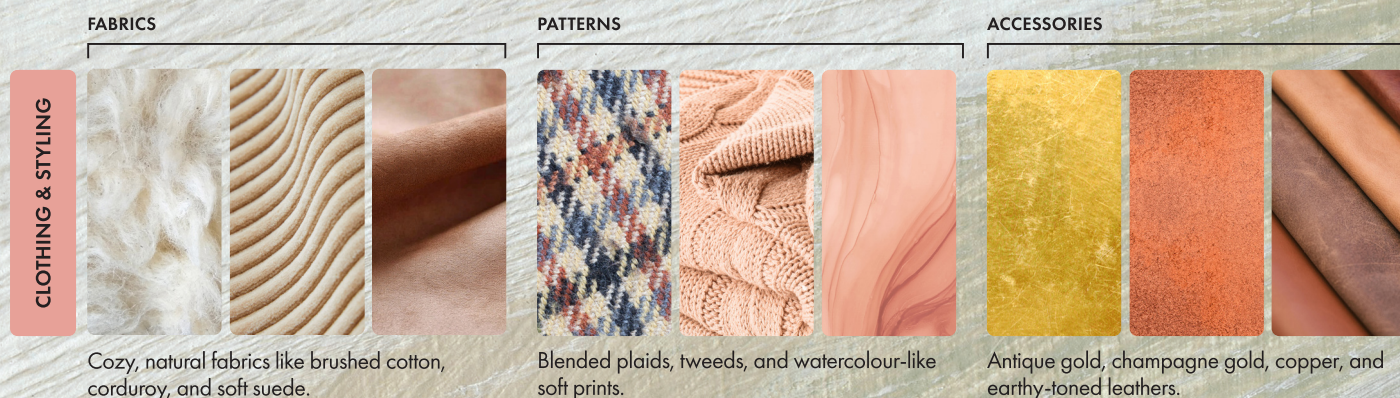
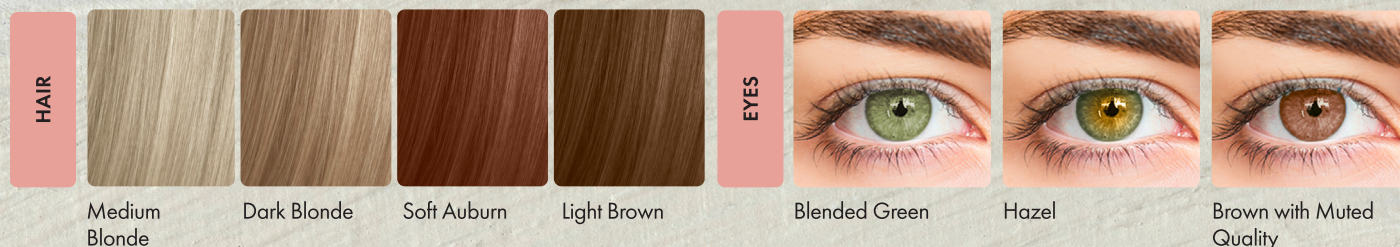
Bold earthy patterns like paisleys, plaids, and ethnic prints.

Yellow gold, bronze, amber, tortoiseshell and warm-toned leather.

# Muted Autumn

Muted (soft) Autumn is soft and earthy, with warm-neutral undertones. The colors as a group look gentle, faded, and softened, without any harshness. The overall impression is warm, natural, and easygoing.

**NOTE:**  
Avoid harsh brights:  
Neon Pink, Icy Blue, Pure White, Jet Black, Fuchsia, Crimson, True Navy



# Deep Autumn

Deep (Dark) Autumn is bold and grounded, with strong depth. The palette as a whole looks dark, intense, and powerful, while still holding warmth throughout. It feels dramatic, rich, and commanding.

**NOTE:**  
Avoid pale or neon tones: Pastels, Bright Pink, Icy Blue, Light Grey, Pure White, Neon Yellow, Soft Lilac

