

Find Your Season

# Summer

Colour Analysis

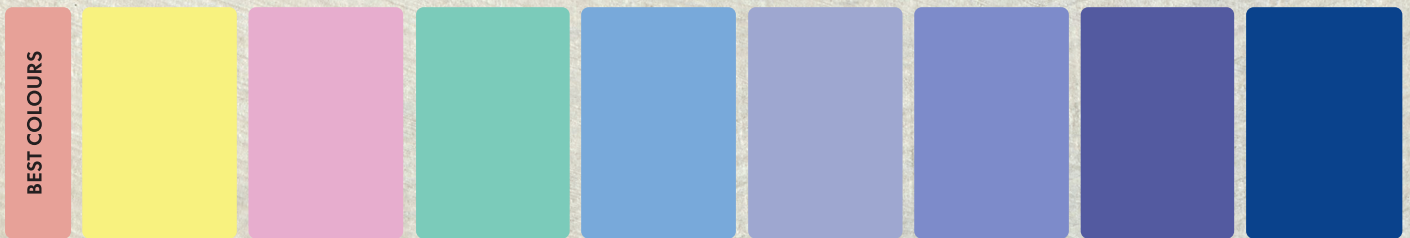
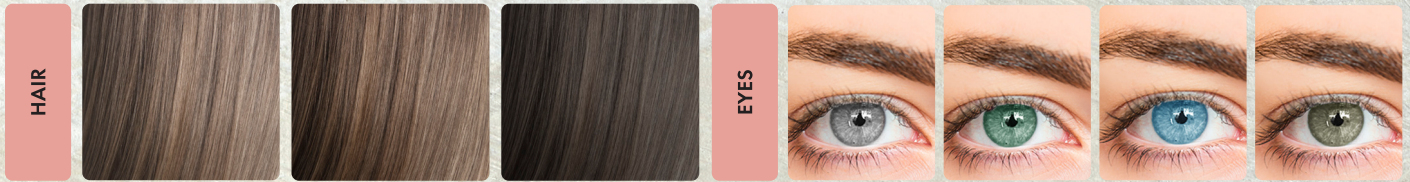
**SOFT • COOL • AIRY • GENTLE**

Summer appears soft, calm, and cool. The colours are lighter and slightly muted, giving a smooth and blended look. The overall impression is gentle, airy, and refined, with a sense of quiet elegance. Picture the washed blues of the sea, the dusty pink of roses, and the cool haze of a summer sky.

# True Summer

True (Cool) Summer is calm and balanced, built on cool tones. Colors look soft and slightly faded, like dusky blues or muted pinks, without being too sharp. The overall impression is smooth, cool, and harmonious.

**NOTE:**  
Avoid warm earthy colours: Mustard, Burnt Orange, Olive, Gold, Rust, Camel, Tomato Red.



Smooth, matte textures like fine cotton, cashmere, and lightweight wool. Classic, cool-toned patterns like houndstooth, checks, or icy florals. Silver, platinum, pearls and cool-toned stones.

# Light Summer

Light Summer is soft, airy, and delicate with a cool undertone. The palette looks light, gentle, and hazy, giving it an almost misty or powdery effect. It feels soft, calm, and ethereal.

**NOTE:**  
Avoid dark or overly warm tones:  
Black, Mustard, Olive, Burgundy, Rust & Gold.

**HAIR**

Light Blonde      Light brown      Soft Ash Brown

**EYES**

Grey      Soft Green      Blue

**BEST COLOURS**

Pale Beige      Chiffon      Mint      Powder Blue      Light Lilac      Soft Pink      Blush      Lavender

**NEUTRALS**

Light Grey      Cool Beige      Soft Taupe      Powder Blue-Grey      Soft Navy

**EYESHADOW**

Pale Pink      Lavender      Soft Grey      Silver Shimmer

**BLUSH**

Baby Pink      Cool Peach      Light Rose

**LIPSTICK**

Soft Pink Nude      Rosy Pink      Strawberry

**FABRICS**

**PATTERNS**

**ACCESSORIES**

**CLOTHING & STYLING**

Airy, flowy fabrics like chiffon, voile, and soft linen.

Watercolour florals, soft stripes, and blended light colour designs.

Silver or rose gold, with soft pastel gemstones.

# Muted Summer

Muted (Soft) Summer is muted and blended, with cool-neutral undertones. Colors look gentle and slightly greyed, as if softened by a layer of mist. The palette feels natural, understated, and subtle.

**NOTE:**  
Avoid harsh or neon brights: Neon Pink, Lime, Black, Bright Red, Hot Orange, Emerald, Fuchsia.

